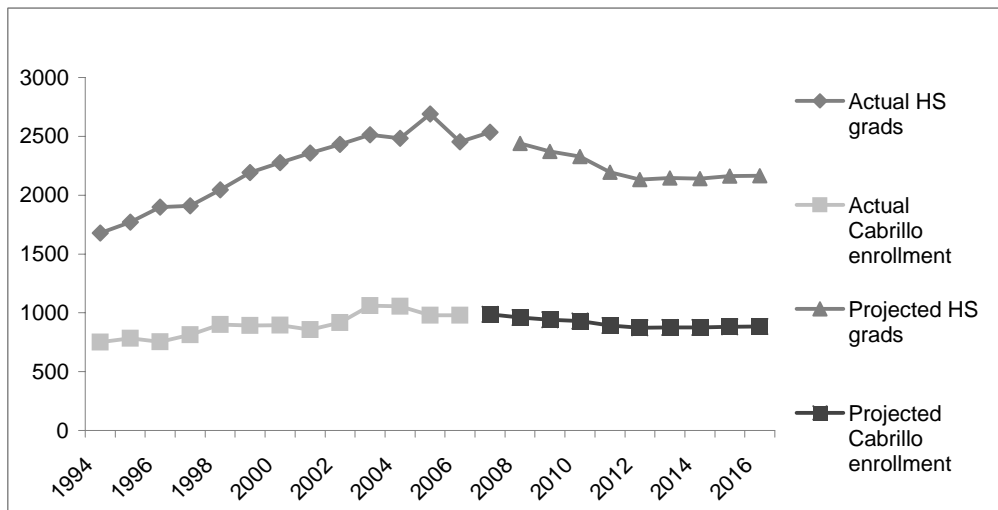


# Actual and Projected Santa Cruz Public High School Graduate Enrollment

## STUDENT ENROLLMENT



H.S. AY	Grade Enrollment		High School Graduates			CC AY	Grads Enrolled at Cabrillo	
	N	% Chng	HS Class	Graduates	% Chng	AY	CC enr	% Chng
1992-3	1796		1993	1736		1993-94	673	
1993-4	1766	-1.7%	1994	1679	0.1%	1994-95	751	11.6%
1994-5	2047	15.9%	1995	1770	0.1%	1995-96	782	4.1%
1995-6	2039	-0.4%	1996	1899	0.1%	1996-97	753	-3.7%
1996-7	2236	9.7%	1997	1909	0.1%	1997-98	812	7.8%
1997-8	2278	1.9%	1998	2044	0.1%	1998-99	901	11.0%
1998-9	2541	11.5%	1999	2191	0.1%	1999-00	893	-0.9%
1999-0	2668	5.0%	2000	2276	0.1%	2000-01	895	0.2%
2000-1	2672	0.1%	2001	2359	0.1%	2001-02	856	-4.4%
2001-2	2807	5.1%	2002	2431	0.0%	2002-03	917	7.1%
2002-3	2806	0.0%	2003	2513	0.0%	2003-04	1062	15.8%
2003-4	2886	2.9%	2004	2483	0.0%	2004-05	1055	-0.7%
2004-5	2948	2.1%	2005	2690	0.0%	2005-06	979	-7.2%
2005-6	3108	5.4%	2006	2454	0.0%	2006-07	979	0.0%
2006-7	3210	3.3%	2007	2535	0.0%	2007-08	988	0.9%
2007-8	3089	-3.8%	2008	2439	0.0%	2008-09	961	-2.7%
2008-9	3006	-2.7%	2009	2373	0.0%	2009-10	942	-2.0%
2009-10	2948	-1.9%	2010	2328	0.0%	2010-11	929	-1.4%
2010-11	2780	-5.7%	2011	2195	0.0%	2011-12	891	-4.1%
2011-12	2701	-2.8%	2012	2133	0.0%	2012-13	874	-1.9%
2012-13	2718	0.6%	2013	2146	0.0%	2013-14	877	0.3%
2013-14	2712	-0.2%	2014	2141	0.0%	2014-15	876	-0.1%
2014-15	2740	1.0%	2015	2163	0.0%	2015-16	882	0.7%
2015-16	2741	0.0%	2016	2164	0.0%	2016-17	883	0.1%

### Sources and Projection Assumptions:

Enrollment and Graduation Data are from California Department of Finance (DOF). October 2007  
<http://www.dof.ca.gov/HTML/DEMOGRAP/ReportsPapers/Projections/Enrollment/K12-05/K12EnrImntPrjctns2007.php> The DOF's projection methods changed in 2006 & 2007 resulting in fairly large changes from previous years' estimates of high school graduates.

12th grade Enrollment projections were based on the strong relationship ( $R^2=0.74$ ) observed between H.S. graduates and H.S. graduate enrollment at Cabrillo observed from 93-94 to 04-05 by using the formula:

$$\text{H.S. Grads Enrolling at Cabrillo} = 0.285 \times (\text{DOF H.S. graduates}) + 265.6$$