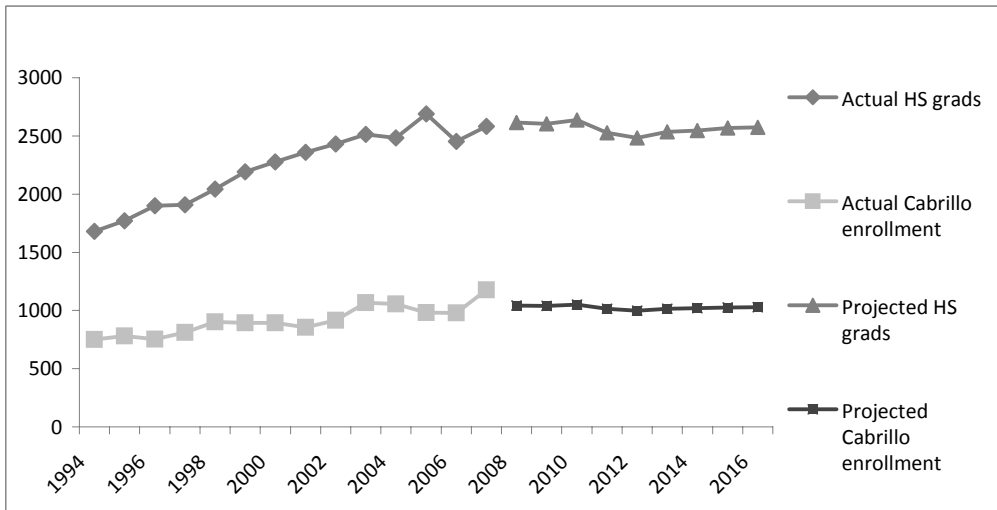


Actual and Projected Santa Cruz Public High School Graduate Enrollment

STUDENT ENROLLMENT



Santa Cruz H.S. AY	12th Grade Enrollment		High School Graduates			CC	Grads Enrolled at Cabrillo	
	N	% Chng	HS Class	Graduates	% Chng	AY	CC enr	% Chng
1992-3	1796		1993	1736		1993-94	673	
1993-4	1766	-1.7%	1994	1679	-3.3%	1994-95	751	11.6%
1994-5	2047	15.9%	1995	1770	5.4%	1995-96	782	4.1%
1995-6	2039	-0.4%	1996	1899	7.3%	1996-97	753	-3.7%
1996-7	2236	9.7%	1997	1909	0.5%	1997-98	812	7.8%
1997-8	2278	1.9%	1998	2044	7.1%	1998-99	901	11.0%
1998-9	2541	11.5%	1999	2191	7.2%	1999-00	893	-0.9%
1999-0	2668	5.0%	2000	2276	3.9%	2000-01	895	0.2%
2000-1	2672	0.1%	2001	2359	3.6%	2001-02	856	-4.4%
2001-2	2807	5.1%	2002	2431	3.1%	2002-03	917	7.1%
2002-3	2806	0.0%	2003	2513	3.4%	2003-04	1068	16.5%
2003-4	2886	2.9%	2004	2483	-1.2%	2004-05	1056	-1.1%
2004-5	2948	2.1%	2005	2690	8.3%	2005-06	981	-7.1%
2005-6	3108	5.4%	2006	2454	-8.8%	2006-07	980	-0.1%
2006-7	3210	3.3%	2007	2583	5.3%	2007-08	1177	20.1%
2007-8	3200	-0.3%	2008	2,616	1.3%	2008-09	1043	-11.4%
2008-9	3169	-1.0%	2009	2,603	-0.5%	2009-10	1038	-0.4%
2009-10	3195	0.8%	2010	2,637	1.3%	2010-11	1050	1.1%
2010-11	3048	-4.6%	2011	2,528	-4.1%	2011-12	1013	-3.5%
2011-12	2982	-2.2%	2012	2,484	-1.7%	2012-13	999	-1.4%
2012-13	3027	1.5%	2013	2,534	2.0%	2013-14	1015	1.7%
2013-14	3028	0.0%	2014	2,546	0.5%	2014-15	1019	0.4%
2014-15	3040	0.4%	2015	2,568	0.9%	2015-16	1027	0.7%
2015-16	3034	-0.2%	2016	2,575	0.3%	2016-17	1029	0.2%

Sources and Projection Assumptions:

Enrollment and Graduation Data are from California Department of Finance (DOF). October 2008 <http://www.dof.ca.gov/HTML/DEMOGRAP/ReportsPapers/Projections/Enrollment/K12-05/K12EnrlmntPrjctns2008.php> The DOF's projection methods changed in 2006 & 2007 resulting in fairly large changes from previous years' estimates of high school graduates.

Projections of HS Grads Enrolled at Cabrillo were based on the strong relationship ($R^2 = 0.72$) observed between HS graduates and HS graduate enrollment at Cabrillo from 93-94 to 06-07 by using the formula: HS Grads Enrolling at Cabrillo = $0.332 \times (\text{HS graduates}) + 173.1$