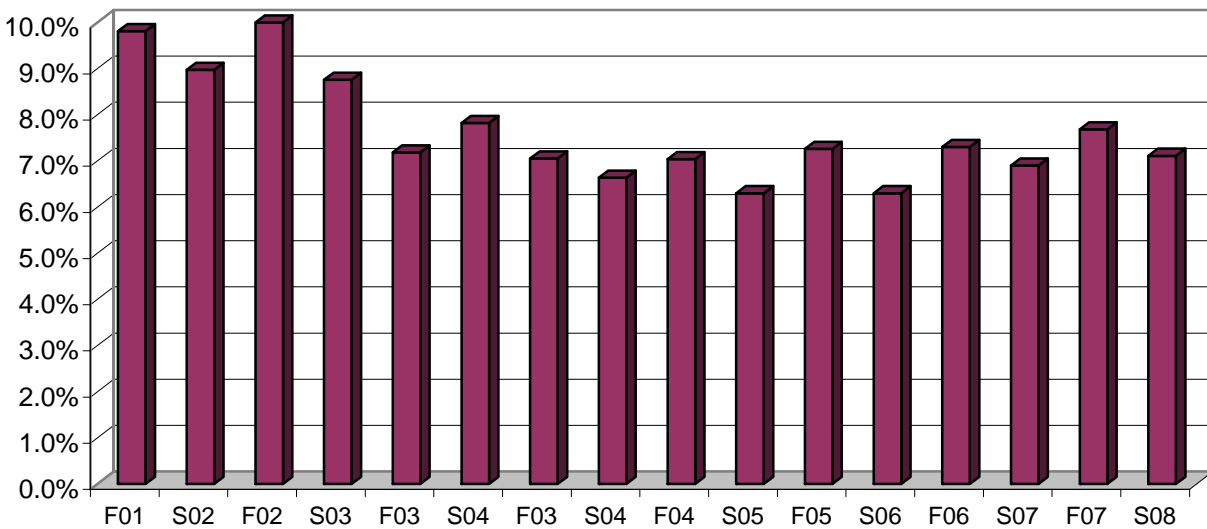


# Proportion of Students with a Bus Pass

## STUDENT DEMOGRAPHICS



Semester	Bus Passes	Enrollment	Percent with Bus Passes	Bus Pass Change	Enrollment Change
Fall 2001	1459	14,871	9.8%	-2.4%	14.3%
Spring 2002	1391	15,503	9.0%	-5.4%	6.2%
Fall 2002	1538	15,231	10.1%	5.4%	2.4%
Spring 2003	1411	16,111	8.8%	1.4%	3.9%
Fall 2003	1068	14,867	7.2%	-30.6%	-2.4%
Spring 2004	1182	15,108	7.8%	-16.2%	-6.2%
Fall 2004	1031	14,623	7.1%	-3.5%	-1.6%
Spring 2005	1018	15,340	6.6%	-13.9%	1.5%
Fall 2005	1067	15,157	7.0%	3.5%	3.7%
Spring 2006	970	15,277	6.3%	-4.7%	-0.4%
Fall 2006	1093	15,056	7.3%	6.0%	3.0%
Spring 2007	1038	15,131	6.9%	1.96%	-1.36%
Fall 2007	1235	16,069	7.7%	15.7%	6.0%
Spring 2008	1165	16,384	7.1%	20.1%	7.2%

Source: Student Services and Data Warehouse

For more transportation information see "Cabrillo College Transportation Study" located at:  
[http://pro.cabrillo.edu/pro/pro\\_reports/](http://pro.cabrillo.edu/pro/pro_reports/)