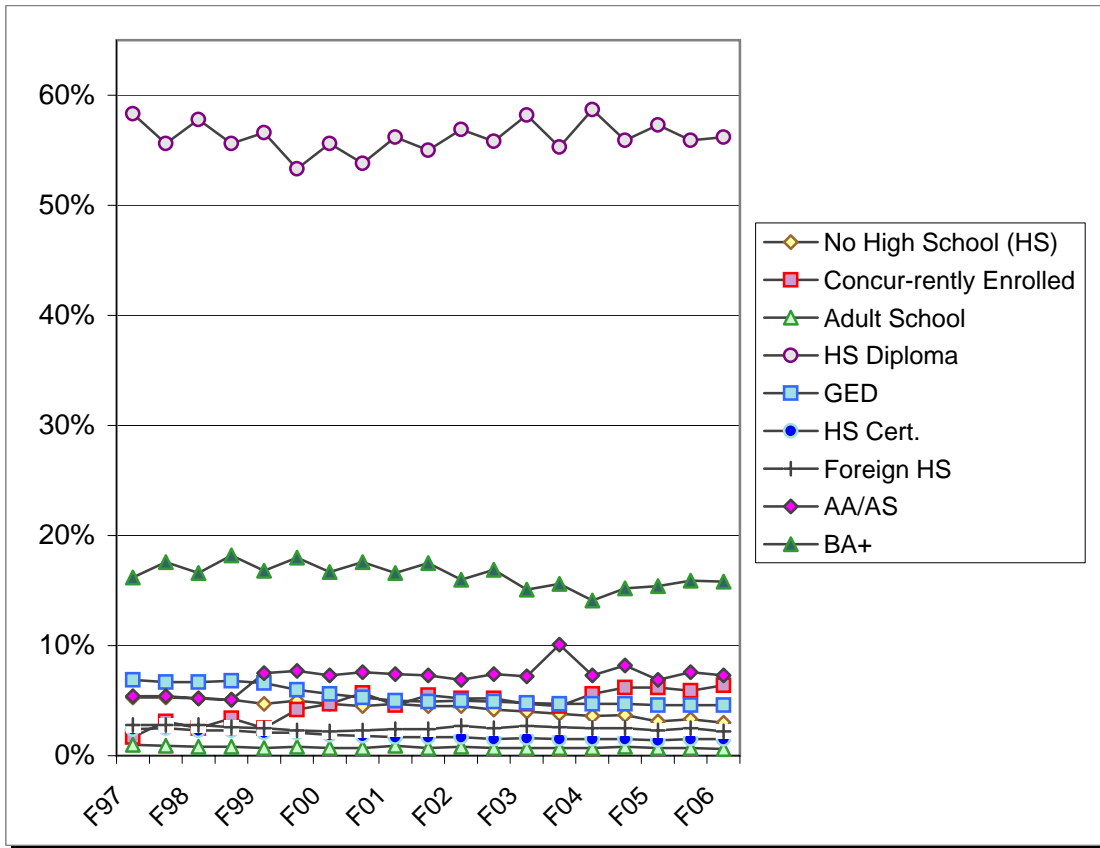


Educational Background

STUDENT DEMOGRAPHICS



	No High School (HS)	Concurrently Enrolled	Adult School	HS Diploma	GED	HS Cert.	Foreign HS	AA/AS	BA+	Unknown	Total
F97	5.3%	1.7%	1.0%	58.3%	6.9%	2.4%	2.8%	5.4%	16.2%	0.0%	13,598
S98	5.3%	3.1%	0.9%	55.6%	6.7%	2.5%	2.8%	5.4%	17.6%	0.0%	13,569
F98	5.2%	2.5%	0.8%	57.8%	6.7%	2.3%	2.8%	5.2%	16.6%	0.0%	13,767
S99	5.1%	3.4%	0.8%	55.6%	6.8%	2.3%	2.6%	5.1%	18.2%	0.0%	13,918
F99	4.7%	2.5%	0.7%	56.6%	6.6%	2.1%	2.5%	7.5%	16.8%	0.1%	13,718
S00	5.0%	4.2%	0.8%	53.3%	6.0%	2.1%	2.3%	7.7%	18.0%	0.7%	14,615
F00	4.7%	4.7%	0.7%	55.6%	5.6%	1.9%	2.2%	7.3%	16.7%	0.6%	13,621
S01	4.5%	5.7%	0.7%	53.8%	5.3%	1.8%	2.3%	7.6%	17.6%	0.6%	14,601
F01	4.7%	4.6%	0.9%	56.2%	5.0%	1.7%	2.4%	7.4%	16.6%	0.5%	14,871
S02	4.5%	5.5%	0.7%	55.0%	4.9%	1.7%	2.4%	7.3%	17.5%	0.4%	15,503
F02	4.5%	5.2%	0.8%	56.9%	5.0%	1.7%	2.7%	6.9%	16.0%	0.4%	15,231
S03	4.2%	5.2%	0.7%	55.8%	4.9%	1.5%	2.5%	7.4%	16.9%	0.9%	16,111
F03	4.0%	4.7%	0.7%	58.2%	4.8%	1.6%	2.7%	7.2%	15.1%	0.9%	14,867
S04	3.8%	4.5%	0.7%	55.3%	4.7%	1.5%	2.6%	10.1%	15.6%	1.2%	15,108
F04	3.6%	5.6%	0.7%	58.7%	4.7%	1.5%	2.5%	7.3%	14.1%	1.1%	14,623
S05	3.7%	6.2%	0.8%	55.9%	4.7%	1.5%	2.5%	8.2%	15.2%	1.2%	15,340
F05	3.1%	6.2%	0.7%	57.3%	4.6%	1.4%	2.3%	6.9%	15.4%	2.1%	15,157
S06	3.3%	5.9%	0.7%	55.9%	4.6%	1.5%	2.5%	7.6%	15.9%	2.2%	15,277
F06	3.0%	6.4%	0.6%	56.2%	4.6%	1.5%	2.2%	7.3%	15.8%	2.4%	15,056
S07	3.4%	6.1%	0.6%	54.9%	4.5%	1.6%	2.3%	6.9%	17.2%	2.5%	15,131

Source: Data Warehouse (Enroll::Student)