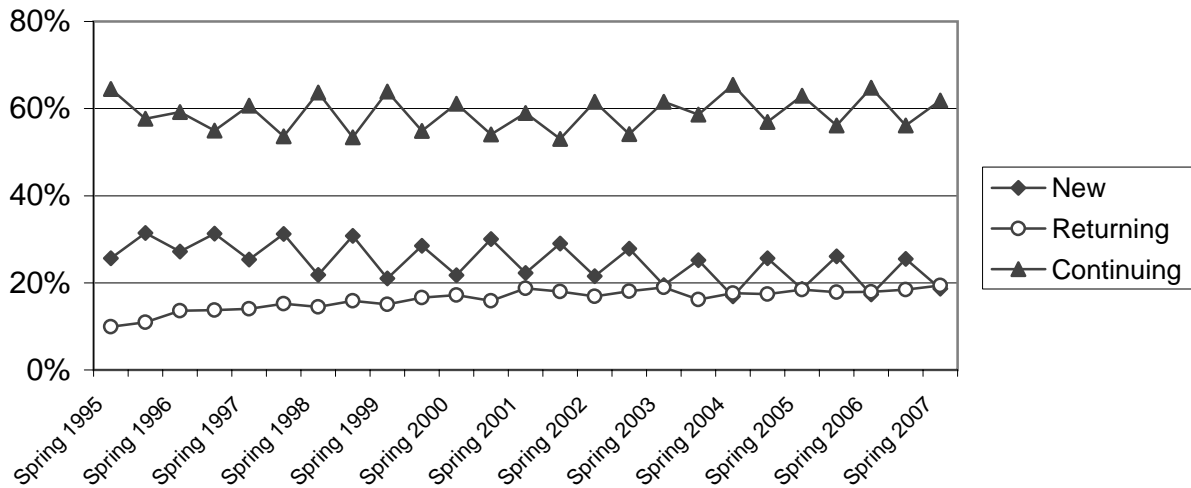


Enrollment by Student Status

STUDENT DEMOGRAPHICS



Semester	New		Returning		Continuing	
	#	%	#	%	#	%
Spring 1995	3,378	25.6	1,304	9.9	8,503	64.5
Fall 1995	3,811	31.4	1,326	10.9	6,990	57.6
Spring 1996	3,757	27.2	1,883	13.6	8,190	59.2
Fall 1996	3,994	31.3	1,753	13.7	7,016	55.0
Spring 1997	3,453	25.3	1,912	14.0	8,274	60.7
Fall 1997	4,239	31.2	2,063	15.2	7,289	53.6
Spring 1998	2,960	21.8	1,960	14.5	8,640	63.7
Fall 1998	4,232	30.7	2,186	15.9	7,346	53.4
Spring 1999	2,925	21.0	2,089	15.0	8,887	63.9
Fall 1999	3,904	28.5	2,277	16.6	7,517	54.9
Spring 2000	3,176	21.8	2,504	17.2	8,917	61.1
Fall 2000	4,095	30.1	2,159	15.9	7,359	54.1
Spring 2001	3,246	22.2	2,734	18.7	8,609	59.0
Fall 2001	4,307	29.0	2,670	18.0	7,882	53.0
Spring 2002	3,333	21.5	2,617	16.9	9,538	61.6
Fall 2002	4,236	27.8	2,752	18.1	8,238	54.1
Spring 2003	3,139	19.5	3,050	18.9	9,907	61.5
Fall 2003	3,748	25.2	2,398	16.1	8,715	58.6
Spring 2004	2,549	16.9	2,665	17.6	9,892	65.5
Fall 2004	3,749	25.6	2,543	17.4	8,330	57.0
Spring 2005	2,851	18.6	2,833	18.5	9,656	62.9
Fall 2005	3,948	26.0	2,701	17.8	8,508	56.1
Spring 2006	2,644	17.3	2,740	17.9	9,893	64.8
Fall 2006	3,835	25.5	2,775	18.4	8,446	56.1
Spring 2007	2,828	18.7	2,940	19.4	9,363	61.9

Source: Data Warehouse

Includes all students, including special admit.

New: First time student at Cabrillo.
 Returning: Student was not enrolled in the prior major term.
 Continuing: Student was enrolled in the prior term.