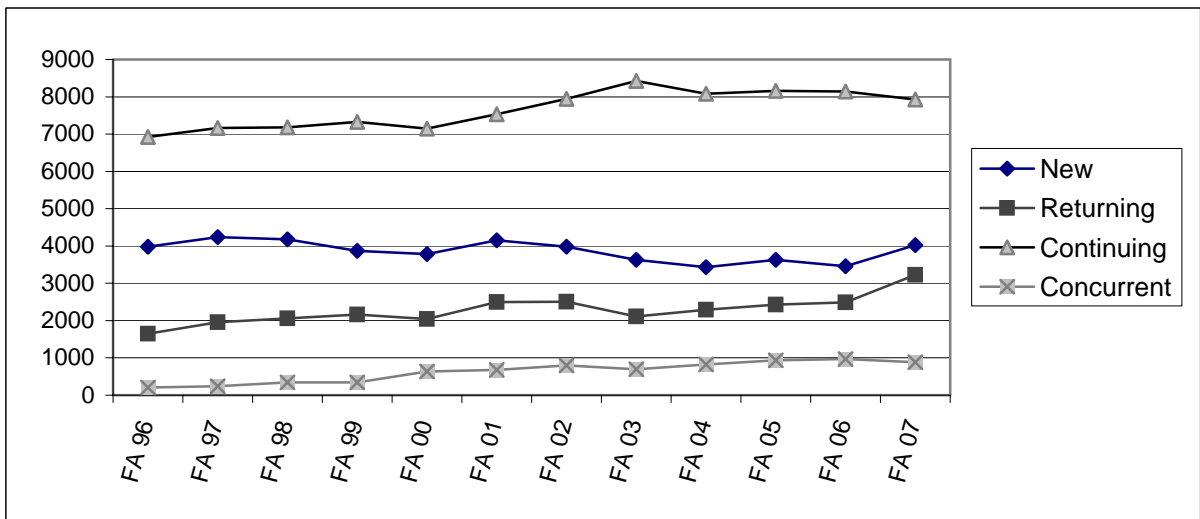


Enrollment by Student Status

STUDENT DEMOGRAPHICS



Semester	New		Returning		Continuing		Concurrent	
	#	%	#	%	#	%	#	%
Spring 1996	3,614	26.1%	1,788	12.9%	8,071	58.4%	359	2.6%
Fall 1996	3,979	31.2%	1,651	12.9%	6,923	54.2%	210	1.6%
Spring 1997	3,314	24.3%	1,825	13.4%	8,156	59.8%	345	2.5%
Fall 1997	4,235	31.2%	1,959	14.4%	7,161	52.7%	236	1.7%
Spring 1998	2,741	20.2%	1,874	13.8%	8,525	62.9%	422	3.1%
Fall 1998	4,181	30.4%	2,060	15.0%	7,179	52.2%	344	2.5%
Spring 1999	2,707	19.5%	2,000	14.4%	8,713	62.7%	480	3.5%
Fall 1999	3,869	28.2%	2,159	15.8%	7,327	53.5%	342	2.5%
Spring 2000	2,854	19.6%	2,413	16.5%	8,732	59.8%	598	4.1%
Fall 2000	3,786	27.8%	2,040	15.0%	7,151	52.5%	636	4.7%
Spring 2001	2,910	19.9%	2,589	17.7%	8,254	56.6%	835	5.7%
Fall 2001	4,154	28.0%	2,497	16.8%	7,532	50.7%	675	4.5%
Spring 2002	2,978	19.2%	2,445	15.8%	9,205	59.4%	859	5.5%
Fall 2002	3,977	26.1%	2,505	16.5%	7,948	52.2%	795	5.2%
Spring 2003	2,947	18.3%	2,824	17.5%	9,485	58.9%	840	5.2%
Fall 2003	3,632	24.4%	2,107	14.2%	8,424	56.7%	699	4.7%
Spring 2004	2,473	16.4%	2,474	16.4%	9,485	62.8%	674	4.5%
Fall 2004	3,430	23.5%	2,288	15.6%	8,080	55.3%	825	5.6%
Spring 2005	2,539	16.6%	2,635	17.2%	9,207	60.0%	958	6.2%
Fall 2005	3,631	24.0%	2,431	16.0%	8,160	53.8%	934	6.2%
Spring 2006	2,491	16.3%	2,510	16.4%	9,377	61.4%	898	5.9%
Fall 2006	3,460	23.0%	2,485	16.5%	8,140	54.1%	971	6.4%
Spring 2007	2,695	17.8%	2,689	17.8%	8,822	58.3%	925	6.1%
Fall 2007	4,027	25.1%	3,228	20.1%	7,927	49.3%	887	5.5%
Spring 2008	2,526	15.4%	2,916	17.8%	10,056	61.4%	886	5.4%

Source: Data Warehouse
 Chart shows Fall values only.

New: First time student at Cabrillo.
 Returning: Student was not enrolled in the prior major term.
 Continuing: Student was enrolled in the prior term.
 Concurrent: Concurrently enrolled **high school** students (special admit students)