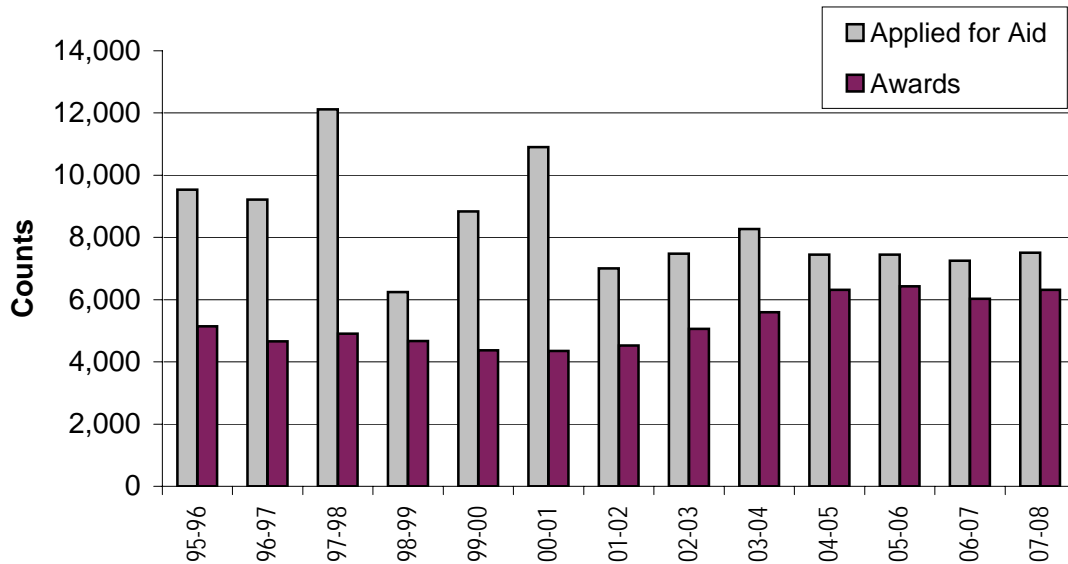


Number of Financial Aid Recipients and Applicants

STUDENT DEMOGRAPHICS



Financial Aid Awards Applications and Award Information by Academic Year

Aca Year	Registered	Applied for Aid	Rate of Aid App	Awards	Rate of Rec'g Awards
95-96	19,552	9,537	48.8%	5,144	53.9%
96-97	20,052	9,219	46.0%	4,657	50.5%
97-98	20,572	12,120	58.9%	4,910	40.5%
98-99	20,741	6,249	30.1%	4,673	74.8%
99-00	21,382	8,838	41.3%	4,374	49.5%
00-01	22,028	10,903	49.5%	4,348	39.9%
01-02	23,451	7,004	29.9%	4,522	64.6%
02-03	24,256	7,483	30.9%	5,058	67.6%
03-04	22,834	8,272	36.2%	5,597	67.7%
04-05	23,497	7,450	31.7%	6,313	84.7%
05-06	24,736	7,445	30.1%	6,432	86.4%
06-07	24,740	7,252	29.3%	6,026	83.1%
07-08	27,201	7,508	27.6%	6,311	84.1%
Total:	295,042	109,280	37.0%	68,365	62.6%

Note 1: Registered refers to unduplicated counts of students who registered at Cabrillo in an academic year (summer, fall, winter, spring). However, this number may be higher than the count of all students who actually attended classes.

Note 2: Per MIS DED SF21, types of financial aid include Board of Governors Enrollment Fee Waivers, Grants, Loans, Scholarships, and Work Study.

Source: Data Warehouse
Amended: Dec. 8, 2008