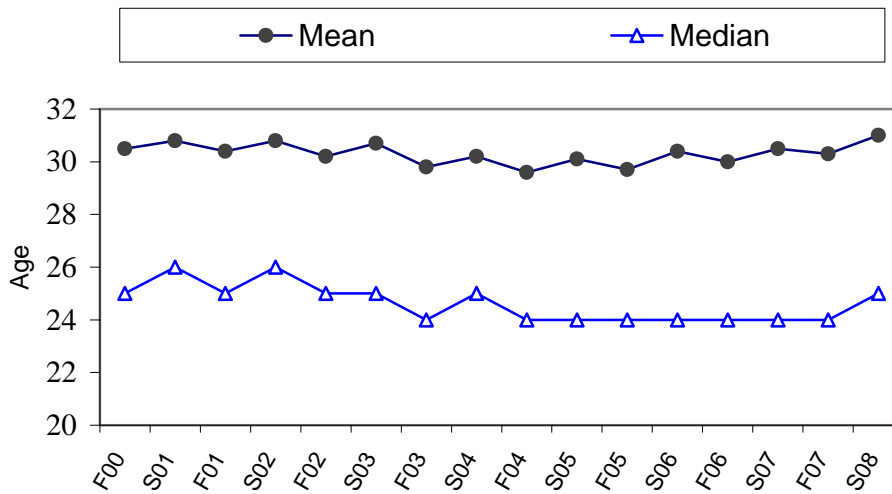


Mean and Median Age of Students

STUDENT DEMOGRAPHICS



Semester	Age	
	Mean	Median
Fall 2000	30.5	25
Spring 2001	30.8	26
Fall 2001	30.4	25
Spring 2002	30.8	26
Fall 2002	30.2	25
Spring 2003	30.7	25
Fall 2003	29.8	24
Spring 2004	30.2	25
Fall 2004	29.6	24
Spring 2005	30.1	24
Fall 2005	29.7	24
Spring 2006	30.4	24
Fall 2006	30.0	24
Spring 2007	30.5	24
Fall 2007	30.3	24
Spring 2008	31.0	25

Source: Data Warehouse (Enroll::Student)

Fall three year average: 30.3

Spring three-year average: 30.0

The median age is lower than the average age because there are relatively few older students, but the range of older students' ages is very great, causing the arithmetic mean to be substantially higher than the median age. The median represents the mid-point of the age distribution indicating that half our students are 25 or younger and half are 25 or older (for Spring 2008).