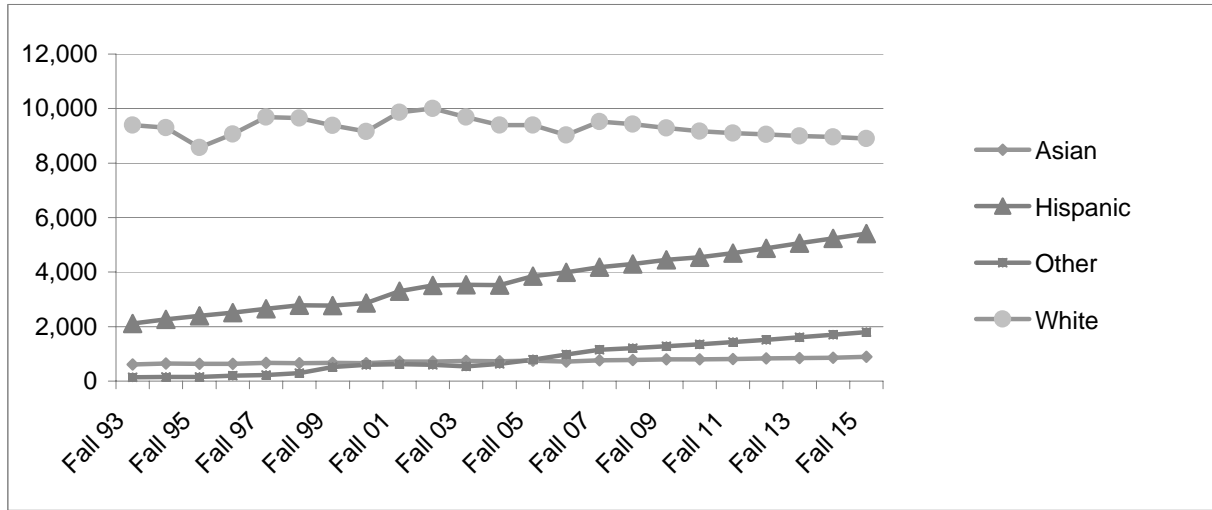


Enrollment Projections by Ethnicity

STUDENT ENROLLMENT



	African-American		Asian*		Hispanic		Native American		Decline/Other		White		Total
	#	%	#	%	#	%	#	%	#	%	#	%	
1993	164	1.3%	610	4.8%	2118	16.8%	164	1.3%	138	1.1%	9393	74.6%	12587
1994	214	1.7%	643	5.0%	2272	17.8%	177	1.4%	153	1.2%	9300	72.9%	12759
1995	217	1.8%	632	5.2%	2399	19.8%	161	1.3%	147	1.2%	8573	70.7%	12129
1996	201	1.6%	632	5.0%	2507	19.6%	172	1.3%	196	1.5%	9059	71.0%	12767
1997	178	1.3%	672	4.9%	2651	19.5%	187	1.4%	222	1.6%	9686	71.2%	13596
1998	181	1.3%	658	4.8%	2778	20.2%	197	1.4%	299	2.2%	9654	70.1%	13767
1999	189	1.4%	668	4.9%	2776	20.3%	176	1.3%	521	3.8%	9377	68.4%	13707
2000	169	1.2%	662	4.9%	2864	21.1%	156	1.1%	594	4.4%	9159	67.3%	13604
2001	209	1.4%	720	4.8%	3301	22.2%	159	1.1%	622	4.2%	9860	66.3%	14871
2002	233	1.5%	718	4.7%	3511	23.1%	161	1.1%	599	3.9%	10009	65.7%	15231
2003	219	1.5%	740	5.0%	3534	23.8%	152	1.0%	536	3.6%	9686	65.2%	14867
2004	237	1.6%	727	5.0%	3522	24.0%	130	0.9%	635	4.3%	9398	64.2%	14649
2005	246	1.6%	746	4.9%	3846	25.4%	140	0.9%	781	5.2%	9398	62.0%	15157
2006	221	1.5%	716	4.8%	3990	26.5%	128	0.8%	971	6.4%	9030	60.0%	15056
2007	239	1.5%	765	4.8%	4182	26.0%	155	1.0%	1152	7.1%	9519	59.7%	16012
2008	241	1.5%	772	4.8%	4296	26.7%	145	0.9%	1207	7.5%	9429	58.6%	16090
2009	243	1.5%	794	4.9%	4455	27.5%	146	0.9%	1280	7.9%	9283	57.3%	16200
2010	244	1.5%	796	4.9%	4550	28.0%	146	0.9%	1349	8.3%	9165	56.4%	16249
2011	247	1.5%	805	4.9%	4700	28.6%	148	0.9%	1430	8.7%	9105	55.4%	16434
2012	250	1.5%	834	5.0%	4870	29.2%	150	0.9%	1518	9.1%	9057	54.3%	16679
2013	254	1.5%	846	5.0%	5057	29.9%	152	0.9%	1607	9.5%	8997	53.2%	16912
2014	258	1.5%	858	5.0%	5236	30.5%	155	0.9%	1700	9.9%	8962	52.2%	17168
2015	261	1.5%	888	5.1%	5414	31.1%	157	0.9%	1793	10.3%	8896	51.1%	17408

* Asian includes Pacific Islanders and Filipinos.

Methodology: The 2008-2015 ethnicity projections are based on historical enrollment and population projections taken from the DOF Demographic Research Unit's 2007 population estimates. Completed November, 2007.

Sources: Data Warehouse (1993-2006). Fall 2007 Census report.
 State of California, Department of Finance, Population Projections for California and Its Counties 2000-2050, by Age, Gender and Race/Ethnicity, Sacramento, California, July 2007.