

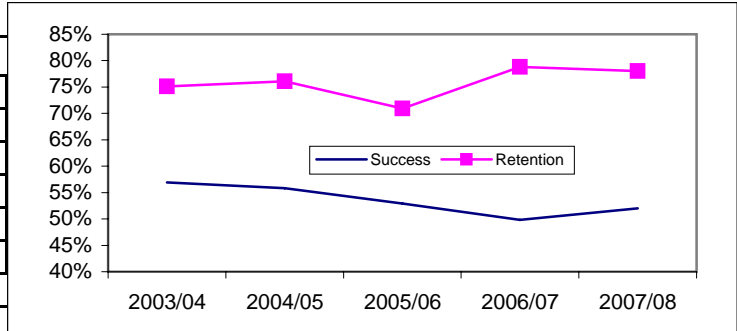
Enrollment, Success, and Retention in Reading and ESL

STUDENT PERFORMANCE

200 level Reading Courses (Basic Skills)			
Year	Enrollments	Success	Retention
2003/04	748	56.9%	75.1%
2004/05	652	55.8%	76.1%
2005/06	777	52.9%	70.9%
2006/07	631	49.8%	78.8%
2007/08	716	52.0%	78.0%
% Change	13.5%	4.4%	-1.0%

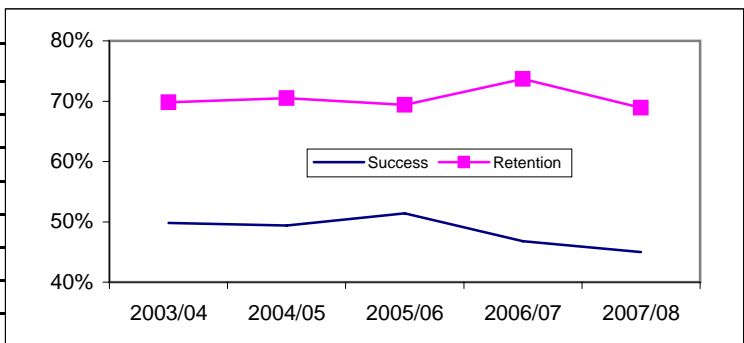
MIS Course [CB08]="B" (Basic Skills)

Includes courses: READ205, READ206, READ206SL, READ210A, READ210B, READ255



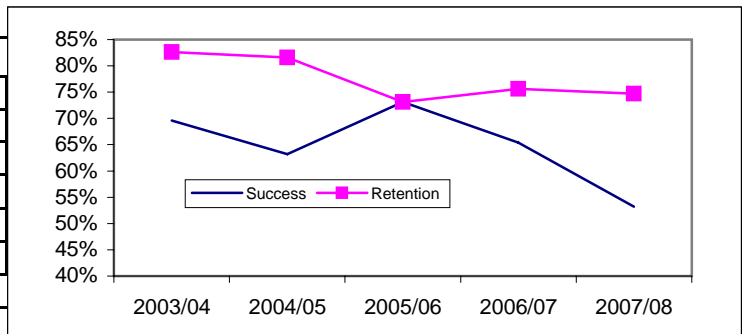
100 level Reading Courses			
Year	Enrollments	Success	Retention
2003/04	276	49.8%	69.8%
2004/05	264	49.4%	70.5%
2005/06	296	51.4%	69.4%
2006/07	299	46.8%	73.7%
2007/08	281	45.0%	68.9%
% Change	-6.0%	-3.8%	-6.5%

Includes courses: READ100, READ106, READ112



Transfer level Reading Courses			
Year	Enrollments	Success	Retention
2003/04	116	69.6%	82.6%
2004/05	93	63.2%	81.6%
2005/06	53	73.1%	73.1%
2006/07	78	65.4%	75.6%
2007/08	79	53.2%	74.7%
% Change	1.3%	-18.7%	-1.2%

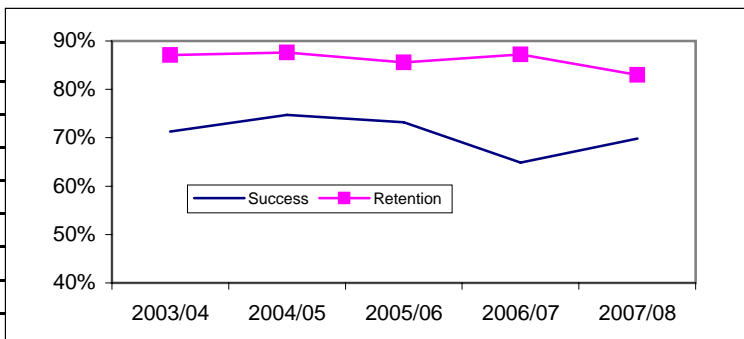
Includes courses: READ20, READ52, READ80S



200 level ESL Courses (Basic Skills)			
Year	Enrollment	Success	Retention
2003/04	1,082	71.3%	87.1%
2004/05	926	74.7%	87.6%
2005/06	948	73.2%	85.6%
2006/07	830	64.9%	87.2%
2007/08	903	69.8%	83.0%
% Change	8.8%	7.6%	-4.8%

ESL is offered at the 200-level only

Includes courses: ESL200, ESL201, ESL202, ESL203, ESL204, ESL220, ESL222, ESL253, ESL260, ESL261, ESL270, ESL27



Success = Course enrollment divided by the number of grades **A, B, C,** or **CR** awarded

Retention = Course enrollment divided by the number of grades **A, B, C, D, F, CR,** or **NC** awarded

Special grade codes of IF, XX, UD, UG, RD grades are not include in computations.

Source: Data Warehouse