

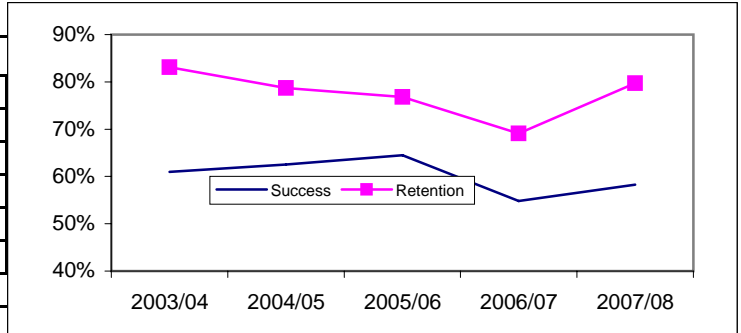
Enrollment, Success, and Retention in English

STUDENT PERFORMANCE

200 level English Courses (Basic Skills)			
Year	Enrollments	Success	Retention
2003/04	1,113	61.0%	83.1%
2004/05	1,056	62.5%	78.7%
2005/06	1,360	64.5%	76.8%
2006/07	817	54.8%	69.1%
2007/08	727	58.3%	79.7%
% Change	-11.0%	6.4%	15.3%

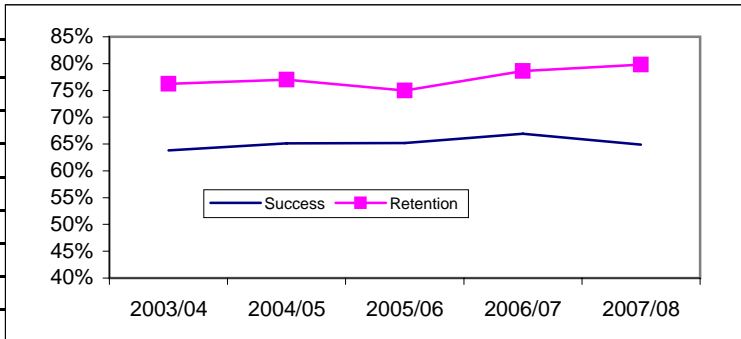
MIS Course [CB08]="B" (Basic Skills)

Includes courses: ENGL250, ENGL251, ENGL255, ENGL256E, ENGL256SL, ENGL290



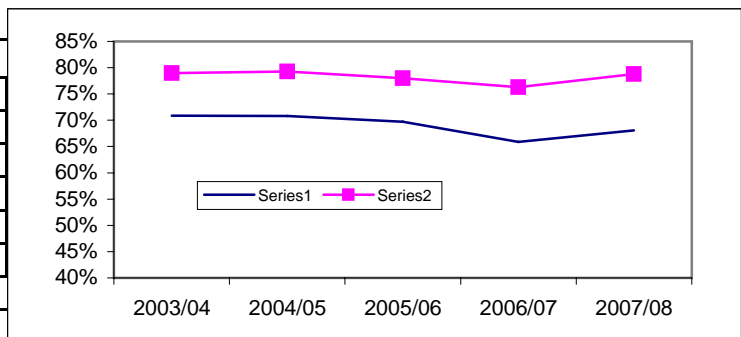
100 level English Courses			
Year	Enrollments	Success	Retention
2003/04	3,995	63.8%	76.2%
2004/05	3,657	65.1%	77.0%
2005/06	3,248	65.2%	75.0%
2006/07	3,236	66.9%	78.6%
2007/08	3,523	64.9%	79.8%
% Change	8.9%	-3.0%	1.5%

Includes courses: ENGL100, ENGL100L, ENGL115, ENGL151, ENGL153, ENGL155A, ENGL155CJ, ENGL155MA



Transfer level English Courses			
Year	Enrollments	Success	Retention
2003/04	4,295	70.9%	79.0%
2004/05	4,442	70.8%	79.3%
2005/06	4,242	69.7%	78.0%
2006/07	4,368	65.9%	76.3%
2007/08	4,684	68.1%	78.8%
% Change	7.2%	3.3%	3.3%

Includes courses: ENGL12A, ENGL12B, ENGL12C, ENGL12E, ENGL14A, ENGL14B, ENGL14E, ENGL1A, ENGL1AMC, ENGL1BMC, ENGL1C, ENGL2, ENGL20B, ENGL22, ENGL23A, ENGL24A, ENGL24B, ENGL2MC, ENGL30A, ENGL30B, ENGL39, ENGL46A, ENGL46B, ENGL48A, ENGL49A, ENGL49B, ENGL50, ENGL80S



Success = Course enrollment divided by the number of grades **A, B, C,** or **CR** awarded

Retention = Course enrollment divided by the number of grades **A, B, C, D, F, CR,** or **NC** awarded

Special grade codes of IF, XX, UD, UG, RD grades are not include in computations.

Source: Data Warehouse