

Enrollment, Success, and Retention in Math

STUDENT PERFORMANCE

200 level Math Courses (Basic Skills)			
Year	Enrollments	Success	Retention
2003/04	1,364	56.7%	76.7%
2004/05	1,213	51.3%	74.5%
2005/06	1,159	52.6%	76.6%
2006/07	1,139	53.4%	75.0%
2007/08	1,196	49.9%	74.4%
% Change	5.0%	-6.6%	-0.8%

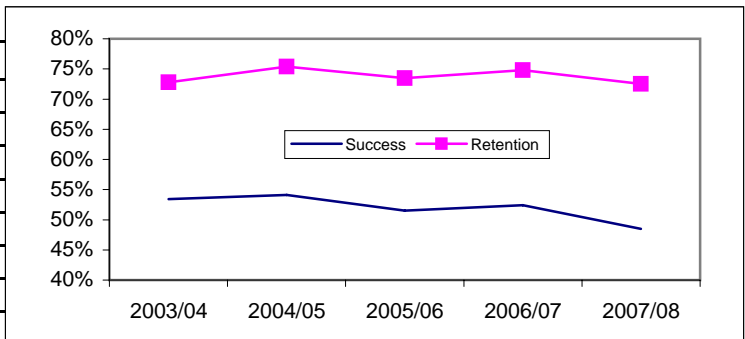
MIS Course [CB08]="B" (Basic Skills)

Includes courses: MATH254, MATH254A, MATH254B



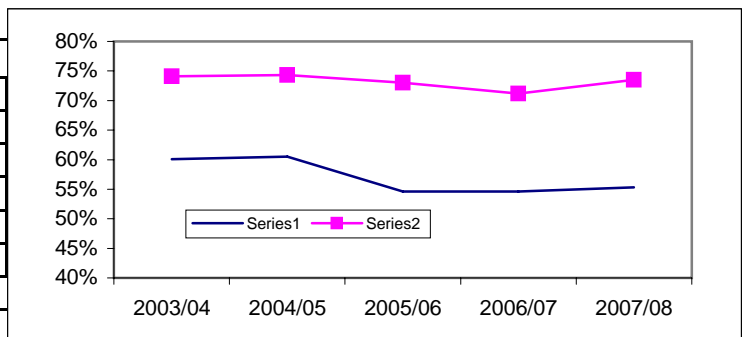
100 level Math Courses			
Year	Enrollments	Success	Retention
2003/04	3,448	53.4%	72.8%
2004/05	3,694	54.1%	75.4%
2005/06	3,705	51.5%	73.5%
2006/07	3,545	52.4%	74.8%
2007/08	3,814	48.5%	72.5%
% Change	7.6%	-7.4%	-3.1%

Includes courses: MATH152, MATH153, MATH154, MATH154A, MATH154B, MATH158BF, MATH158PF, MATH158SI, MATH1



Transfer level Math Courses			
Year	Enrollments	Success	Retention
2003/04	2,851	60.1%	74.1%
2004/05	2,820	60.5%	74.3%
2005/06	2,954	54.6%	73.0%
2006/07	3,010	54.6%	71.2%
2007/08	3,252	55.3%	73.5%
% Change	8.0%	1.3%	3.2%

Includes courses: MATH10, MATH12, MATH13, MATH15, MATH18, MATH23, MATH4, MATH5A, MATH5B, MATH5C, MATH6, MATH7



Success = Course enrollment divided by the number of grades **A, B, C,** or **CR** awarded

Retention = Course enrollment divided by the number of grades **A, B, C, D, F, CR,** or **NC** awarded

Special grade codes of IF, XX, UD, UG, RD grades are not include in computations.

Source: Data Warehouse