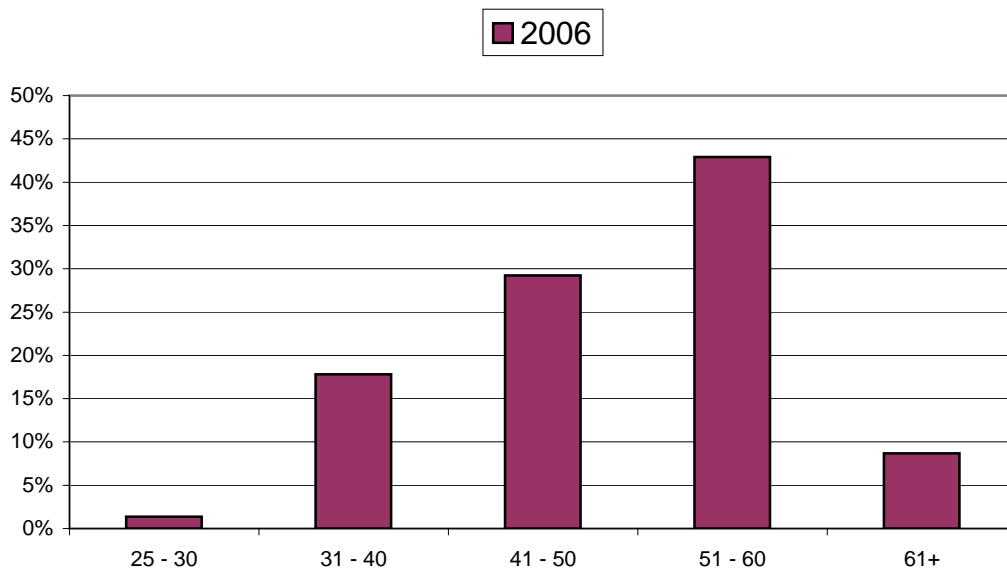


Tenured or Tenure Track Faculty Age Range

FACULTY AND STAFF



	2006	
	#	%
25 - 30	3	1.4%
31 - 40	39	17.8%
41 - 50	64	29.2%
51 - 60	94	42.9%
61+	19	8.7%
Total	219	100.0%

Average Age: 49.5
Median Age: 51.0

Source: Data Warehouse
 MIS DED EB07 (2), EB08 (C, R)
 Count includes Children's Center teachers.