

Enrollment, Success, and Retention in Career Technical Education (CTE)

STUDENT PERFORMANCE

Advanced CTE Courses			
Year	Enrollments	Success	Retention
2003/04	1,651	76.9%	85.3%
2004/05	1,754	79.8%	89.5%
2005/06	2,039	81.5%	89.3%
2006/07	1,665	72.2%	81.7%
2007/08	1,654	73.6%	85.3%
% Change	-0.7%	1.9%	4.4%

SAM Code [CB09] = B (Advanced Occupational)

Includes Transfer level and 100-level courses

Courses from: ACCT, ARCHE, BUS, CABT, CAHM, CEM, CIS, CJ, DH, DM, ECE, FT, HORT, HSERV, JOURN, MA, N, RT

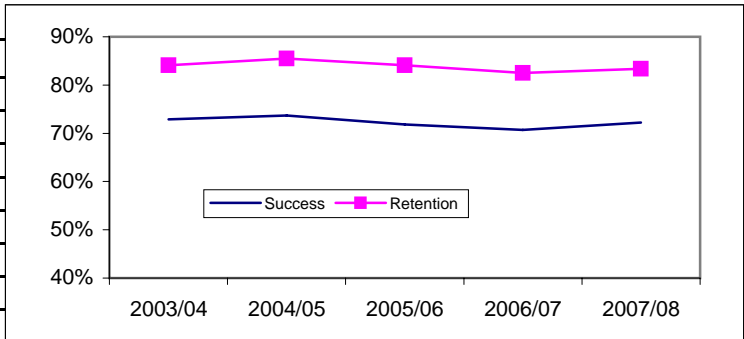


Clearly CTE Courses			
Year	Enrollments	Success	Retention
2003/04	12,041	72.9%	84.1%
2004/05	11,892	73.7%	85.5%
2005/06	11,667	71.8%	84.1%
2006/07	11,271	70.7%	82.5%
2007/08	11,738	72.2%	83.4%
% Change	4.1%	2.1%	1.1%

SAM Code [CB09] = C (Clearly Occupational)

Includes Transfer level, 100-level, and 200-level courses

Courses from: ACCT, ALH, ARCHE, BUS, CABT, CAHM, CEM, CIS, CJ, CS, CWEE, DH, DM, DMCP, ECE, EDUC, ETECH, FI, FT, HORT, HSERV, JOURN, MA, N, RE, RT, SBUS, W

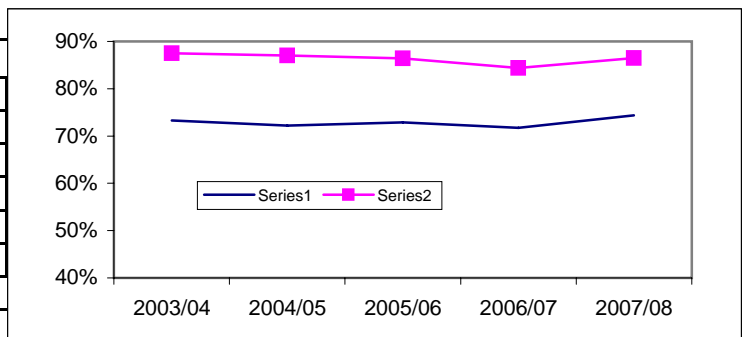


Possibly CTE Courses			
Year	Enrollments	Success	Retention
2003/04	10,391	73.3%	87.5%
2004/05	10,081	72.2%	87.0%
2005/06	10,308	72.9%	86.4%
2006/07	10,513	71.7%	84.4%
2007/08	12,144	74.4%	86.5%
% Change	15.5%	3.8%	2.5%

SAM Code [CB09] = D (Possibly Occupational)

Includes Transfer level, 100-level, and 200-level courses

Courses from: ACCT, ALA, ALH, ARCHE, BUS, CABT, CAHM, CEM, CIS, CJ, CS, DH, DM, DMCP, ECE, ENGR, ETECH, FT, HORT, HSERV, JOURN, MA, N, PSYCH, RE, RT, W



Success = Course enrollment divided by the number of grades **A, B, C,** or **CR** awarded

Retention = Course enrollment divided by the number of grades **A, B, C, D, F, CR,** or **NC** awarded

Special grade codes of IF, XX, UD, UG, RD grades are not include in computations.

Source: Data Warehouse