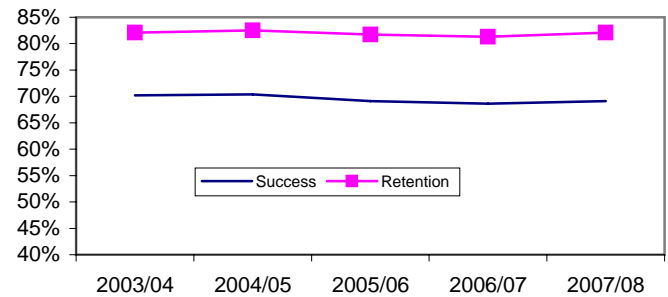


Enrollment, Success and Retention by Course Level

STUDENT PERFORMANCE

Transfer Level Courses

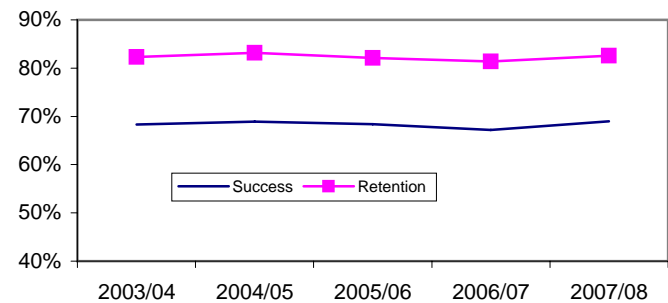
Year	Enrollments	Success	Retention
2003/04	63,523	70.2%	82.1%
2004/05	65,940	70.4%	82.5%
2005/06	68,080	69.1%	81.7%
2006/07	69,342	68.6%	81.3%
2007/08	73,887	69.1%	82.1%
% Change	6.6%	0.7%	1.0%



Transfer status [CB05] = A or B (course transfers to UC or CSU)

100 Level Courses (Degree Applicable)

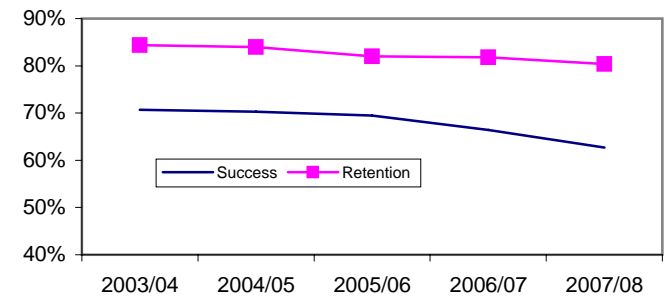
Year	Enrollments	Success	Retention
2003/04	22,088	68.3%	82.3%
2004/05	21,943	68.9%	83.2%
2005/06	21,737	68.4%	82.1%
2006/07	20,645	67.2%	81.4%
2007/08	22,085	69.0%	82.6%
% Change	7.0%	2.7%	1.5%



Credit Status [CB04] = D (Degree Applicable) and Transfer status [CB05] = C (not transferable).

200 Level - Basic Skills Courses

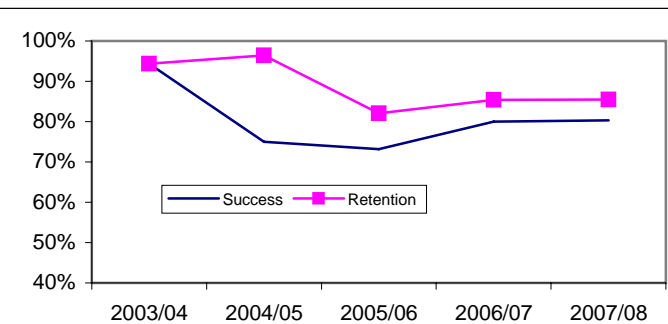
Year	Enrollments	Success	Retention
2003/04	7,061	70.7%	84.4%
2004/05	6,211	70.3%	84.0%
2005/06	6,506	69.5%	82.0%
2006/07	5,561	66.4%	81.8%
2007/08	4,778	62.7%	80.4%
% Change	-14.1%	-5.6%	-1.7%



Credit Status [CB04] = C (not Degree Applicable) and Basic Skills status [CB08] = B (Basic Skills)

200 Level (other)

Year	Enrollment	Success	Retention
2003/04	36	94.4%	94.4%
2004/05	28	75.0%	96.4%
2005/06	56	73.2%	82.1%
2006/07	262	80.0%	85.4%
2007/08	1,317	80.3%	85.5%
% Change	402.7%	0.4%	0.1%



Credit Status [CB04] = C (not Degree Applicable) and Basic Skills status [CB08] = N (not a Basic Skills course)

Success = Course enrollment divided by the number of grades **A, B, C,** or **CR** awarded

Retention = Course enrollment divided by the number of grades **A, B, C, D, F, CR,** or **NC** awarded

Special grade codes of IF, XX, UD, UG, RD grades are not include in computations.

Source: Data Warehouse