

Basic Skills Students Served in LIBR 502 Tutorials

How many basic skills students have been served in Tutorials at Cabrillo College in recent years? Has participation in tutorials been increasing or decreasing?

Students served in Tutorials can be identified by an enrollment record in LIBR 502. The table below shows the number of Tutorial students by academic year beginning with AY 2000-01.

	Headcount
2000-01	737
2001-02	1237
2002-03	1019
2003-04	922
2004-05	898
2005-06	780
2006-07	763
2007-08	896

Basic skills courses, in the strict sense of the definition, are those courses in English, Reading, Math and ESL where the MIS code CB08 is "B" (for Basic Skills). At Cabrillo, this corresponds to 200-level courses.

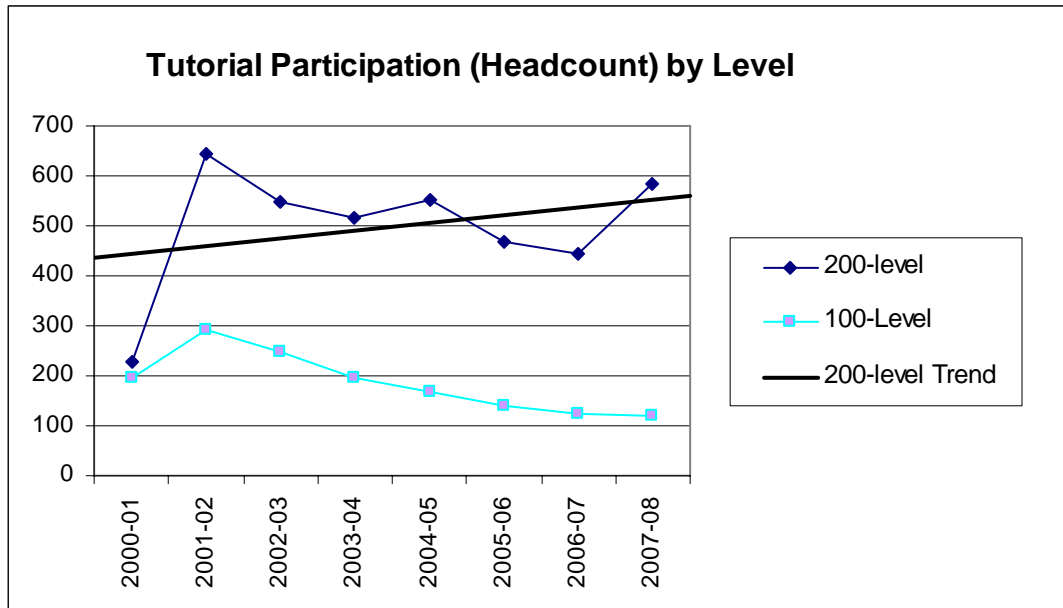
A broader definition of basic skills includes students in 100-level English Reading, and Math (there are no longer ESL courses at the level). 100-level courses are 1 level below transfer-level, and although degree-applicable, do not transfer to four-year colleges and universities.

Two groups or cohorts of basic skills students were formed: those with as an enrollment record in a 200-level English, Reading, Math or ESL course (beginning with the spring 2000 term); and those who were *not* included in the 200-level group but who had an enrollment record in 100-level English, Reading or Math courses. (Those with 100-level enrollments but no 200-level enrollments are assumed to have a higher level of skills to begin with.)

Next, these groups were matched with the LIBR 502 enrollment records. In the table below, the LIBR 502 Tutorial students are broken out according to their membership in the two basic skills cohorts.

	200-level	100-Level	Other	Total
2000-01	230	197	310	737
2001-02	644	294	299	1,237
2002-03	548	249	222	1,019
2003-04	517	198	207	922
2004-05	551	169	178	898
2005-06	470	139	171	780
2006-07	443	124	196	763
2007-08	583	120	193	896

The chart that follows reflects the data from the table above. A trend-line is included for the 200-level basic skills students' participation. We observe that, although the number of 200-level basic skills students dropped in 2005-06, and again in 2006-07, there is a sharp increase in 2007-08. The downward trend has reversed.



As Tutorial participation has fluctuated somewhat from year to year, examining the percentage of basic skills cohorts that participate may be a better measure. From this perspective, it is clear that relative participation by 200-level basic skill students is on the increase.

	200-level	100-Level	Other
2000-01	31.2%	26.7%	42.1%
2001-02	52.1%	23.8%	24.2%
2002-03	53.8%	24.4%	21.8%
2003-04	56.1%	21.5%	22.5%
2004-05	61.4%	18.8%	19.8%
2005-06	60.3%	17.8%	21.9%
2006-07	58.1%	16.3%	25.7%
2007-08	65.1%	13.4%	21.5%

